



**BRAVEHEART  
MARINE**



# FRIENDSHIP II

*Specifications*



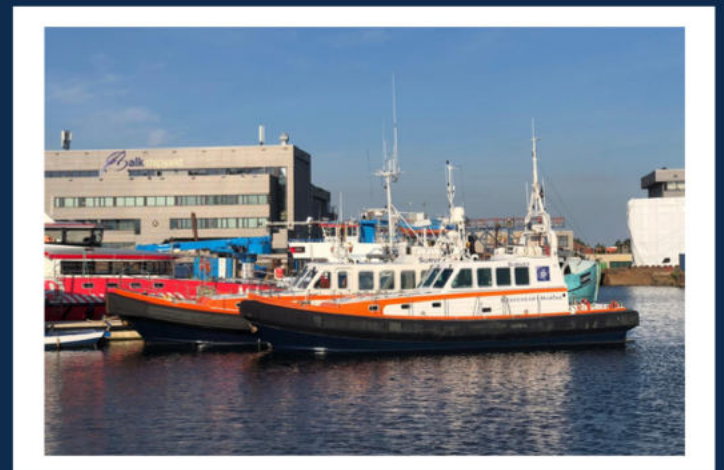


# SURVEY & CREW TENDER VESSEL

## — FRIENDSHIP II —

### MAIN FEATURES

Length	15.00 meters	MMSI	235087045
Breadth o.a.	3.70 meters	Max Speed	13 knots
Draft	1.20 meter	Engines	2 x Volvo Penta
Gross tonnage	23 tons	Power output	2 x 485 HP
Flag state	United Kingdom	Fuel capacity	3.000 liters
Year of build	2000	Fresh water capacity	1.000 liters
Call Sign	2EPG9	Grey water capacity	500 liters



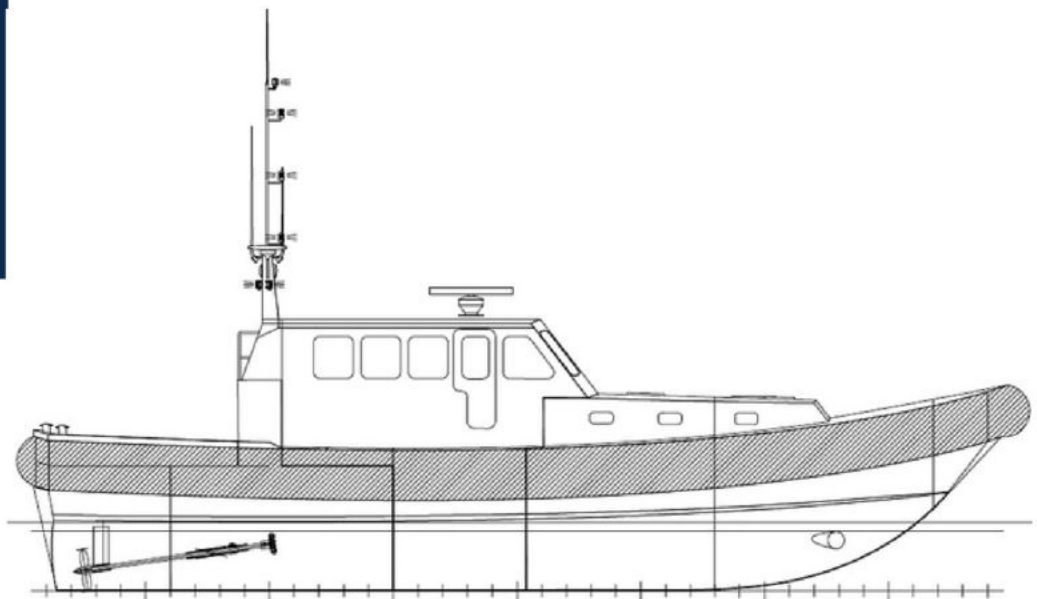
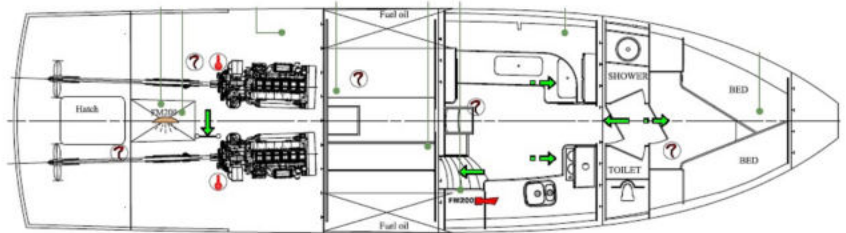
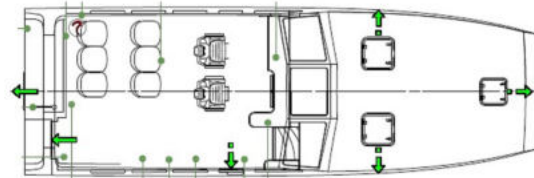
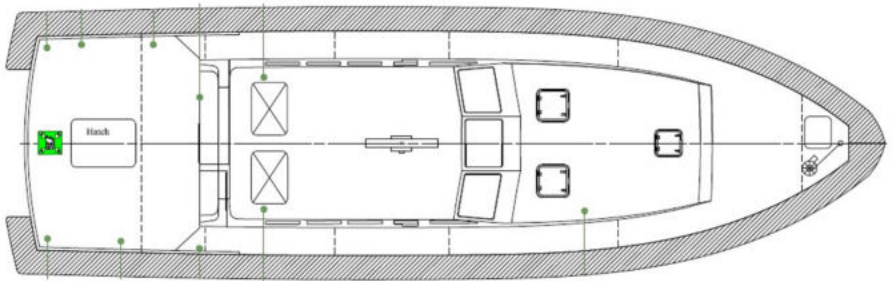
# GENERAL ARRANGEMENT

EQUIPPED FOR BOTH  
SURVEY AND CREW TENDER  
OPERATIONS.

- CTV up to 6 pax
- 1 toilet, galley & shower
- 2 cabins with 2 berths total
- 1 moon pool 650 mm diameter
- Survey desk
- Side pole available
- Trading Area: 60 miles

## SURVEY EQUIPMENT

R2Sonic 2024 Multibeam  
Pos MV Applanix  
Valeport SVS & SVP



ENQUIRE TODAY!

[info@braveheartmarine.com](mailto:info@braveheartmarine.com)